

TOWN OF SOUTHEAST



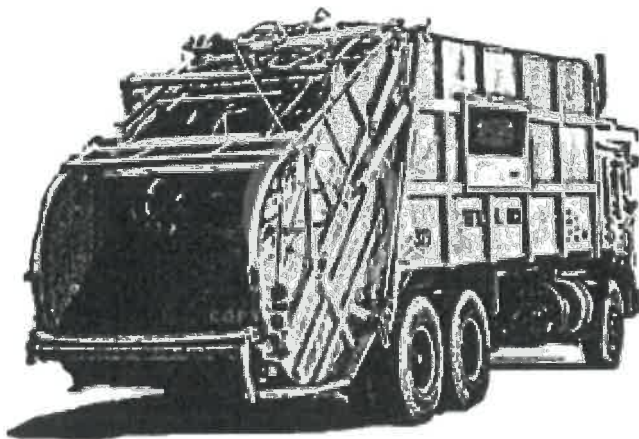
2026 REFUSE COLLECTION SERVICE CONDOMINIUM/TOWNHOUSE DISTRICT

Suburban Carting

1-800-273-9394

Monday – Friday 7:00 A.M. – 5:00 P.M.

Southeast@suburbancarting.com



SERVICES

ZONE SCHEDULE

Pickup will be twice a week according to the following zones:

Zone 1: Mon & Thurs

Zone 2: Tue & Fri

RECYCLING

Pickup once a week - Separation of cardboard/paper from commingled items (cans, plastic and glass)

BULK PICKUP

Bulk pickup is scheduled through your Management Company with Suburban

COLLECTION

limited to (4), 32-gallon containers per pickup with (2) pickups per week

Suburban Carting



2026 Suburban Collection Calendar

ZONE 1 - Refuse Collection	E-WASTE (Drop-off only)
ZONE 2 - Refuse Collection	Shredding Day
HOLIDAYS - No Collection	Christmas Tree Pick-up
Leaf Collection	

Bulk item collections are provided on your second scheduled refuse day, except for holiday weeks

January

S	M	T	W	Th	Fr	Sa
				1	2	3
4	5	6	7	8	9	10
11	12	13	14	15	16	17
18	19	20	21	22	23	24
25	26	27	28	29	30	31

February

S	M	T	W	Th	Fr	Sa
1	2	3	4	5	6	7
8	9	10	11	12	13	14
15	16	17	18	19	20	21
22	23	24	25	26	27	28

March

S	M	T	W	Th	Fr	Sa
1	2	3	4	5	6	7
8	9	10	11	12	13	14
15	16	17	18	19	20	21
22	23	24	25	26	27	28
29	30	31				

April

S	M	T	W	Th	Fr	Sa
			1	2	3	4
5	6	7	8	9	10	11
12	13	14	15	16	17	18
19	20	21	22	23	24	25
26	27	28	29	30		

**E-Waste 1/3/2026

May

S	M	T	W	Th	Fr	Sa
					1	2
3	4	5	6	7	8	9
10	11	12	13	14	15	16
17	18	19	20	21	22	23
24	25	26	27	28	29	30
31						

June

S	M	T	W	Th	Fr	Sa
	1	2	3	4	5	6
7	8	9	10	11	12	13
14	15	16	17	18	19	20
21	22	23	24	25	26	27
28	29	30				

July

S	M	T	W	Th	Fr	Sa
			1	2	3	4
5	6	7	8	9	10	11
12	13	14	15	16	17	18
19	20	21	22	23	24	25
26	27	28	29	30	31	

August

S	M	T	W	Th	Fr	Sa
						1
2	3	4	5	6	7	8
9	10	11	12	13	14	15
16	17	18	19	20	21	22
23	24	25	26	27	28	29
30	31					

September

S	M	T	W	Th	Fr	Sa
		1	2	3	4	5
6	7	8	9	10	11	12
13	14	15	16	17	18	19
20	21	22	23	24	25	26
27	28	29	30			

October

S	M	T	W	Th	Fr	Sa
				1	2	3
4	5	6	7	8	9	10
11	12	13	14	15	16	17
18	19	20	21	22	23	24
25	26	27	28	29	30	31

November

S	M	T	W	Th	Fr	Sa
1	2	3	4	5	6	7
8	9	10	11	12	13	14
15	16	17	18	19	20	21
22	23	24	25	26	27	28
29	30					

December

S	M	T	W	Th	Fr	Sa
		1	2	3	4	5
6	7	8	9	10	11	12
13	14	15	16	17	18	19
20	21	22	23	24	25	26
27	28	29	30	31		

Condominium and Townhouse Schedule

Name of Community	Refuse Pickup Days	Recycling Pickup Days	Bulk Pick-Up Containers
Blackberry Condo 1	Monday Thursday	Monday Thursday	1 Spring 1 Fall
Blackberry Condo 2	Monday Thursday	Monday Thursday	1 Spring 1 Fall
Blackberry Condo 3	Monday Thursday	Monday Thursday	1 Spring 1 Fall
Blackberry Condo 4	Monday Thursday	Monday Thursday	1 Spring 1 Fall
Brewster Woods	Monday Thursday	Monday Thursday	1 Spring 1 Fall
Eagles Ridge	Monday Thursday	Monday Thursday	2 Spring 2 Spring
Fieldstone Pond Condo 1	Monday Thursday	Monday Thursday	1 Spring 1 Fall
Fieldstone Pond Condo 2	Monday Thursday	Monday Thursday	1 Spring 1 Fall
Fieldstone Pond Condo 3	Monday Thursday	Monday Thursday	1 Spring 1 Fall
Fieldstone Pond Cedar Ridge	Monday Thursday	Monday Thursday	1 Spring 1 Fall
Fieldstone Pond Spring Meadow	Monday Thursday	Monday Thursday	1 Spring 1 Fall
Holly Stream	Tuesday Friday	Tuesday Friday	1 Spring 1 Fall
Hunters Glen	Tuesday Friday	Monday Thursday	3 Spring 3 Fall
Reed Farm	Monday Thursday	Tuesday Friday	3 Spring 3 Fall
Twin Brook	Tuesday Friday	Monday Thursday	1 Spring 1 Fall
Virginia Woods	Monday Thursday	Monday Thursday	1 Spring 1 Fall

SUBURBAN 2026 HOLIDAY AND OBSERVANCE SCHEDULE

January 1, 2026 – New Year’s Day, Thursday – Closed

Trash – **Zone 1** will be picked up Monday & Friday
Zone 2 will be picked up Tuesday & Saturday
 Recycling – Same as above

January 19, 2026 – Martin Luther King Day, Monday – Open

All Zones will be picked up on a normal schedule

February 16, 2026 – President’s Day, Monday – Closed

Trash – **Zone 1** will be picked up Tuesday & Thursday
Zone 2 will be picked up Wednesday & Friday
 Recycling – Same as above

May 25, 2026 – Memorial Day, Monday – Closed

Trash – **Zone 1** will be picked up Tuesday & Thursday
Zone 2 will be picked up Wednesday & Friday
 Recycling – Same as above

June 19, 2026 – Juneteenth, Friday – Open

All Zones will be picked up on a normal schedule

July 4, 2026 – Independence Day, Saturday – Suburban Closed Friday

Trash – **Zone 1** Normal Pickup
Zone 2 - No 2nd pickup this week
 Recycling – **Zone 2** recycling pickup on Thursday - Normal
Zone 2 Friday pickup - No pick up

September 7, 2026 – Labor Day, Monday – Closed

Trash – **Zone 1** will be picked up Tuesday & Thursday
Zone 2 will be picked up Wednesday & Friday
 Recycling – Same as above

October 12, 2026 – Columbus Day, Monday – Open

All Zones will be picked up on a normal schedule

November 11, 2026 – Veterans Day, Wednesday – Open

All Zones will be picked up on a normal schedule

November 26, 2026 – Thanksgiving Day, Thursday – Closed

Trash – **Zone 1** will be picked up Monday & Friday
Zone 2 will be picked up Tuesday & Saturday
 Recycling – Same as above

December 25, 2026 – Christmas Day, Friday – Closed

Trash – **Zone 1** will be picked up Monday & Thursday
Zone 2 will be picked up Tuesday & Saturday
 Recycling – Same as above



RECYCLING



Recycling must be separated into two types

TYPE 1 - Cardboard & Paper Only

What must be Recycled?

- ✓ Newspapers
- ✓ Office Paper/Envelopes
- ✓ Magazines & Junk Mail
- ✓ Shredded Paper
- ✓ Phone & Paperback Books
- ✓ Cardboard Boxes & Packaging
- ✓ Shipping / Appliance Boxes
(including corrugated)
- ✓ Pizza Boxes Must be Free of any
Food Particles and Grease Stains.

What is not accepted?

- NO Wax Cardboard
(dark brown cardboard with wax coating)
- NO Paper Towel Rolls or Toilet Paper Rolls
- NO Coffee Cups
- NO Egg Cartons (Pressed Paper or Styrofoam)
- NO Frozen Food Containers
- NO Shoe Boxes
- NO Hard Cover Books
- NO Photos

If any of the above items are in the recycling container, the container will not be recycled

TYPE 2 - Commingled Glass, Cans & Plastics

What must be Recycled?

- ✓ Rinsed Clean Glass Jars & Bottles
(clear and colored)
- ✓ Rinsed Clean Foil Pie Plates,
Foil Containers and Aluminum Foil
- ✓ Rinsed Aluminum Lids from Food Jars
- ✓ Rinsed Clean Aluminum Cans
- ✓ Empty Aerosol Cans
- ✓ Plastic Containers
(#1, #2, #3, #4, #5 and #6), must be washed clean
- ✓ Rinsed Plastic Jugs
(recycling triangles # 1, #2, #3, #4, #5 and #6)
- ✓ Rinsed Plastic Laundry Containers
(recycling triangle #1, #2, #3, #4, #5 and #6)
- ✓ Washed Coffee Containers (Aluminum and Plastic)

What is not accepted?

- NO Plastic Bags of any kind
including Dry Cleaner Bags
- NO Styrofoam Materials, Windows, Mirrors,
Light Bulbs or Drinking Glasses.
- NO Dirty Foil, Paint Cans or Sheet Metal.
- NO Hangers (Plastic or Metal)
- NO Plastic Packaging Material
- NO Laundry Baskets
- NO Cooking Pots or Pans
- NO Utensils (Plastic or Metal)
- NO Electronics; NO Magnets,
NO Batteries of any kind
- NO Pens or Pencils
- NO Plastic Straws or Coffee Cups
- NO Snack Bags (Potato Chips, Pretzels etc..)
- NO Prescription Bottles



Go to www.dec.ny.gov/chemical/294.html.org
to learn more about NYS recycling guidelines

DUMPSTER BULK PICKUP

Every year, each Condo/Townhouse complex within the Refuse District is entitled to **two** bulk pickups. It is up to your Association Board / Management Company to schedule and inform you when they will be taking place.

The following regulations apply to your bulk pickup:

- There are strict regulations on what is accepted
- Bulk pickup is for residential household items only
- All items must be loaded in the dumpster the night before scheduled pickup
- Rugs must be cut, rolled and tied so that no roll is longer than 4 feet
- Please note cardboard, newspapers, magazines are recyclable items are not bulk items
- Tires can be disposed of through local auto repair shops at a nominal charge
- Mattresses must be placed in a mattress bag for safety and health reasons. You can find them at your local hardware or home remodeling store
- Motors are not allowed to be disposed of in landfills. All items with motors must be taken to either a scrap yard or junk yard. Check the web or yellow pages for locations
- Dumpsters containing restricted items are subject to additional charges

The following items are prohibited with dumpster bulk pickup:

Above-ground pools	Freezers	Oil Tanks
Air Conditioners (not certified)	Fuels	Paint
Automotive Parts	Gas Tanks	Pallets
Batteries	Hazardous Waste	Pianos/Organs
Boilers/Oil Burners	Hot Water Heaters	Pool Filters
Bricks	Humidifiers	Pool Liners
Cardboard	Large Snow Blowers	Propane Tanks
Chemicals	Liquids	Refrigerators (not certified)
Construction/Renovation/ Remodeling Debris	Logs	Riding Mowers
De-Humidifiers (not certified)	Lumber	Stone
Electronics*	Masonry	Stumps
Fencing	Mattress (must be in a bag)	Trees
	Medical Waste	Tires
		Used Oil



Construction, renovation or remodeling debris will not be picked up

Residents must properly dispose of these items by authorized contractors or take it to a certified refuse transfer station. You can contact Suburban to inquire to their services outside the Town of Southeast's Refuse Program. The charge would be between you and the Carter.

The nearest transfer station for disposing of your construction debris on your own is:

WIN Waste Innovations (aka City Carting)
241 Route 100
Somers, NY 10589
(914) 277-4211 – **Reservations only**

TOWN OF SOUTHEAST



The Town of Southeast encourages residents to **stay informed** of what services are available as well as any new and improved resources for 2026.

To receive emails or texts regarding updated Town news and notifications, go to www.southeast-ny.gov and follow these steps:

1. Click on "SUBSCRIBE" on the lefthand side of the screen
2. In the "NOTIFY ME" section, enter your email address and click "SIGN IN"
3. Scroll to the bottom of the page and click on "TOWN NEWS" to receive notifications from the Town as soon as updated information is posted on the website
4. You will receive an email from listserv@civicplus.com
5. Open this email to verify your email

TOWN DEPARTMENTS

Accounting	845	279	7338	Planning	845	279	7736
Assessor	845	279	7336	Recreation/Facilities	845	279	3915
Building	845	279	2123	Special Districts	845	279	8206
Court	845	279	8939	Supervisor	845	279	5345
Highway	845	279	2141	Tax Receiver	845	279	7665
Parking	845	279	7665	Town Clerk	845	279	2196

OTHER IMPORTANT NUMBERS

Board of Elections	845	808	1300	Fire Dpt.	845	279	3555
Library	845	279	6421	NYS Police	845	279	6161
Putnam County	845	808	1000	PC Sheriff	845	225	4300
Village of Brewster	845	279	3760	911/NY Alert	www.alert.ny.gov		

ADDITIONAL TOWN SERVICES 2026

Please take advantage of the Town's user-friendly website to get more details as well as rules and procedures on the below services. Simply go to the "Search" bar and search for the specific service. Southeast-ny.gov

E-Waste, AC Units, Dehumidifiers and Shredding Services



All E-Waste and Shredding will be held at:	<u>Shredding</u>	<u>E-Waste/AC</u>	
Town of Southeast Highway Department	June 6	Jan 3	Jul 11
10 Palmer Road		Mar 7	Sep 5
Brewster, New York		May 2	Nov 7

E-Waste /AC Units/Dehumidifiers hours: 9:00 – 12:00 and Shredding Day hours: 9:00 – 12:00

E-Mail questions to: ewaste@southeast-ny.gov or call 845-279-2196/5345

Town of Southeast residents only – NYS driver's license and proof of residency required

*Due to July 4th holiday, E-Waste will be held on the second Saturday, July 11th

**** NO DUMPING ELECTRONICS OUTSIDE THE ABOVE E-WASTE SCHEDULE**

***** BATTERIES ARE NOT ACCEPTED E-WASTE, DO NOT PUT BATTERIES IN THE RESIDENTIAL GARBAGE DUE TO THIS BEING A FIRE HAZARD, CONTACT STAPLES FOR DISCARDING BATTERIES**

THANK YOU FOR NOT DUMPING ON OUR ROADS AND KEEPING OUR TOWN BEAUTIFUL

EARTH DAY Town-Wide Clean-Up Celebration

Saturday April 18th & Sunday April 19th

Stop by Town Hall (1360 Route 22 Brewster) either day from 8 A.M. until noon

Or pick up supplies earlier in the week by calling Town Hall 845-279-2196

Suburban Carting graciously provides the Town with bags, gloves and safety vests annually

Putnam County HAZARDOUS WASTE Collection

A Spring & Fall date will be announced by the PC Health Department. Pre-registration is required
Putnamhealth@putnamcountyny.gov or (845)808-1390, Ext. 431509

LEAF PICKUP by Suburban Carting

May 13th and November 11th and 18th

To Participate, purchase leaf bags at the Town Clerk's Office – 1360 Route 22
(Leaves **MUST** be in compostable bags provided by the Town Clerk in order for pickup)

Curbside by 6:00AM on scheduled pickup day

Maximum weight for bags – 60lbs

Maximum bundle size – 3ft x 2ft

No stumps or logs in excess of 5 inches in diameter

NO PLASTIC BAGS

CHRISTMAS TREE PICKUP by Suburban Carting

January 7th and 21st

Generator/Dry Ice/Water/WiFi

Supplied by the Town, 1360 Route 22, during power outages and storm emergencies.
Announcements will be made via the Town Website and the NY Alert Emergency Services

Town of Southeast

2026 Refuse Collection Brochure



Southeast-ny.gov